



FLOOR PLANS

RESIDENCE A

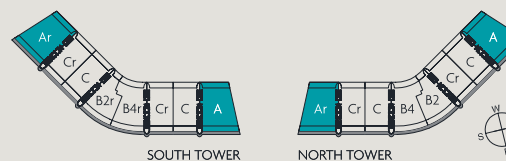
4 BEDROOMS / 5.5 BATHROOMS

INTERIOR	3,927 SF	364.83 M ²
TERRACE	1,137 SF	105.63 M ²
TOTAL *	5,064 SF	470.46 M ²

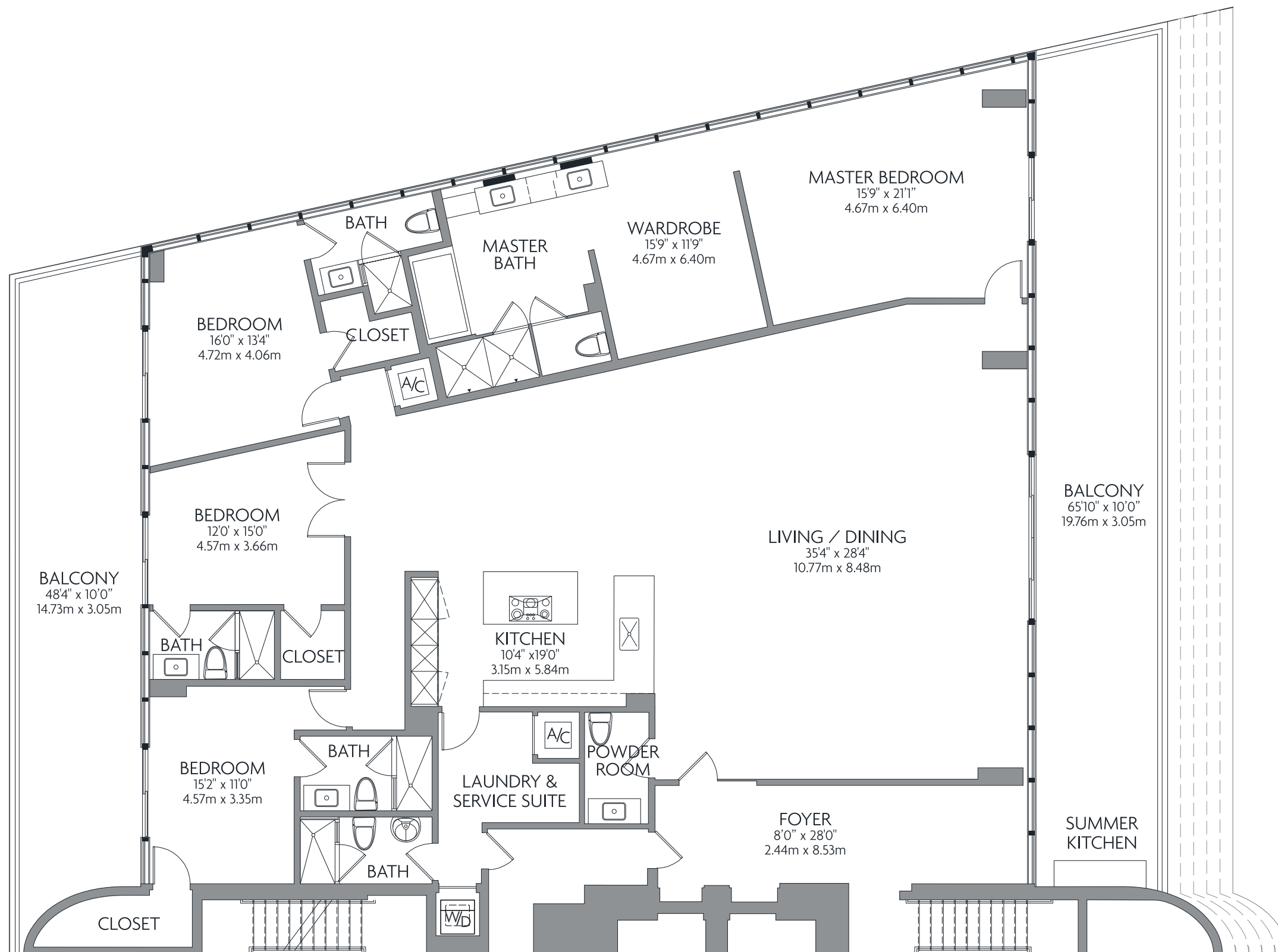
*Floor Plan shown on 9th Floor, add or subtract
64 SF / 5.9 M² per level

Privé offers 160 graciously appointed residences in two dramatically angled, 16-story buildings. Featuring flow-through layouts with soaring, ten-foot ceilings, each Privé residence offers dramatic views of both the Atlantic Ocean and the Intracoastal Waterway through expansive floor-to-ceiling windows.

Private elevator foyers lead to spacious, well-proportioned spaces ranging from 2,585 to over 9,000 square feet. Exceptional fixtures and finishes include European kitchens and baths, plus elaborate summer kitchens for outdoor entertaining on deep, private terraces.



Stated measurements and dimensions of residences are measured to the exterior boundaries of the exterior walls and the centerline of interior demising walls and in fact vary from the dimensions that would be determined by using the description and definition of the "Unit" set forth in the Declaration (which generally only includes the interior airspace between the perimeter walls and excludes all interior structural components and other common elements). This method of measurement used herein is generally used in sales materials and is provided to allow a prospective buyer to compare the Units with units in other projects that utilize the same method. Balconies are not part of the Unit. Measurements of rooms set forth on floorplans are generally taken at the farthest points of each given room (as if the room were a perfect rectangle), without regard for any cutouts or variations. Accordingly, the interior air space dimensions of the actual room will typically be smaller than the product obtained by multiplying the stated length and width. All measurements and dimensions are estimates based on preliminary plans which will vary with actual construction. All floorplans, specifications and other development plans are proposed and conceptual only, and are subject to change and will not necessarily accurately reflect the final plans and specification.



SOLD OUT

SOLD OUT

RESIDENCE B2

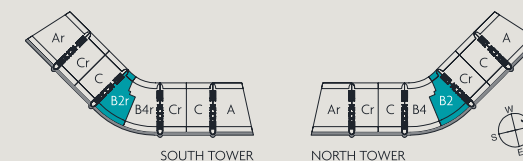
2 BEDROOMS / 2.5 BATHROOMS

INTERIOR	2,817 SF	261.71 M ²
TERRACE	762 SF	70.79 M ²
TOTAL *	3,579 SF	332.5 M ²

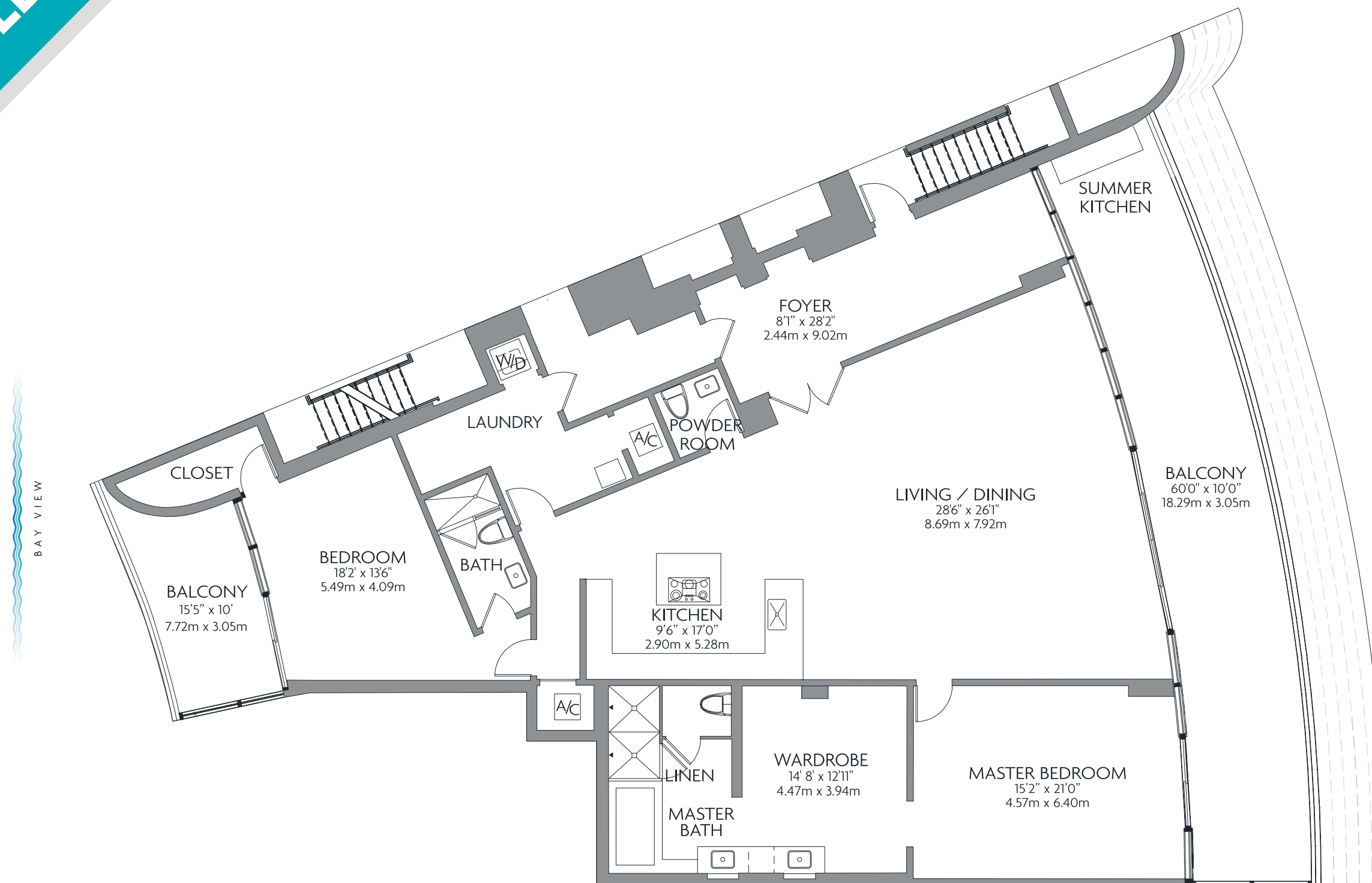
*Floor Plan shown on 9th Floor, subtract 59 SF / 5.5 M² per level

Privé offers 160 graciously appointed residences in two dramatically angled, 16-story buildings. Featuring flow-through layouts with soaring, ten-foot ceilings, each Privé residence offers dramatic views of both the Atlantic Ocean and the Intracoastal Waterway through expansive floor-to-ceiling windows.

Private elevator foyers lead to spacious, well-proportioned spaces ranging from 2,585 to over 9,000 square feet. Exceptional fixtures and finishes include European kitchens and baths, plus elaborate summer kitchens for outdoor entertaining on deep, private terraces.



Stated measurements and dimensions of residences are measured to the exterior boundaries of the exterior walls and the centerline of interior demising walls and in fact vary from the dimensions that would be determined by using the description and definition of the "Unit" set forth in the Declaration (which generally only includes the interior airspace between the perimeter walls and excludes all interior structural components and other common elements). This method of measurement used herein is generally used in sales materials and is provided to allow a prospective buyer to compare the Units with units in other projects that utilize the same method. Balconies are not part of the Unit. Measurements of rooms set forth on floorplans are generally taken at the farthest points of each given room (as if the room were a perfect rectangle), without regard for any cutouts or variations. Accordingly, the interior air space dimensions of the actual room will typically be smaller than the product obtained by multiplying the stated length and width. All measurements and dimensions are estimates based on preliminary plans which will vary with actual construction. All floorplans, specifications and other development plans are proposed and conceptual only, and are subject to change and will not necessarily accurately reflect the final plans and specification.



RESIDENCE B3

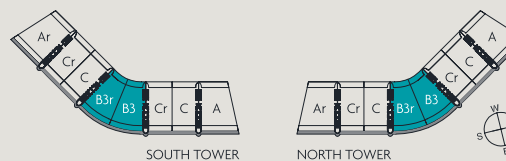
3 BEDROOMS / 4.5 BATHROOMS

INTERIOR	3,198 SF	297.10 M ²
TERRACE	913 SF	84.82 M ²
TOTAL	4,111 SF	381.92 M ²

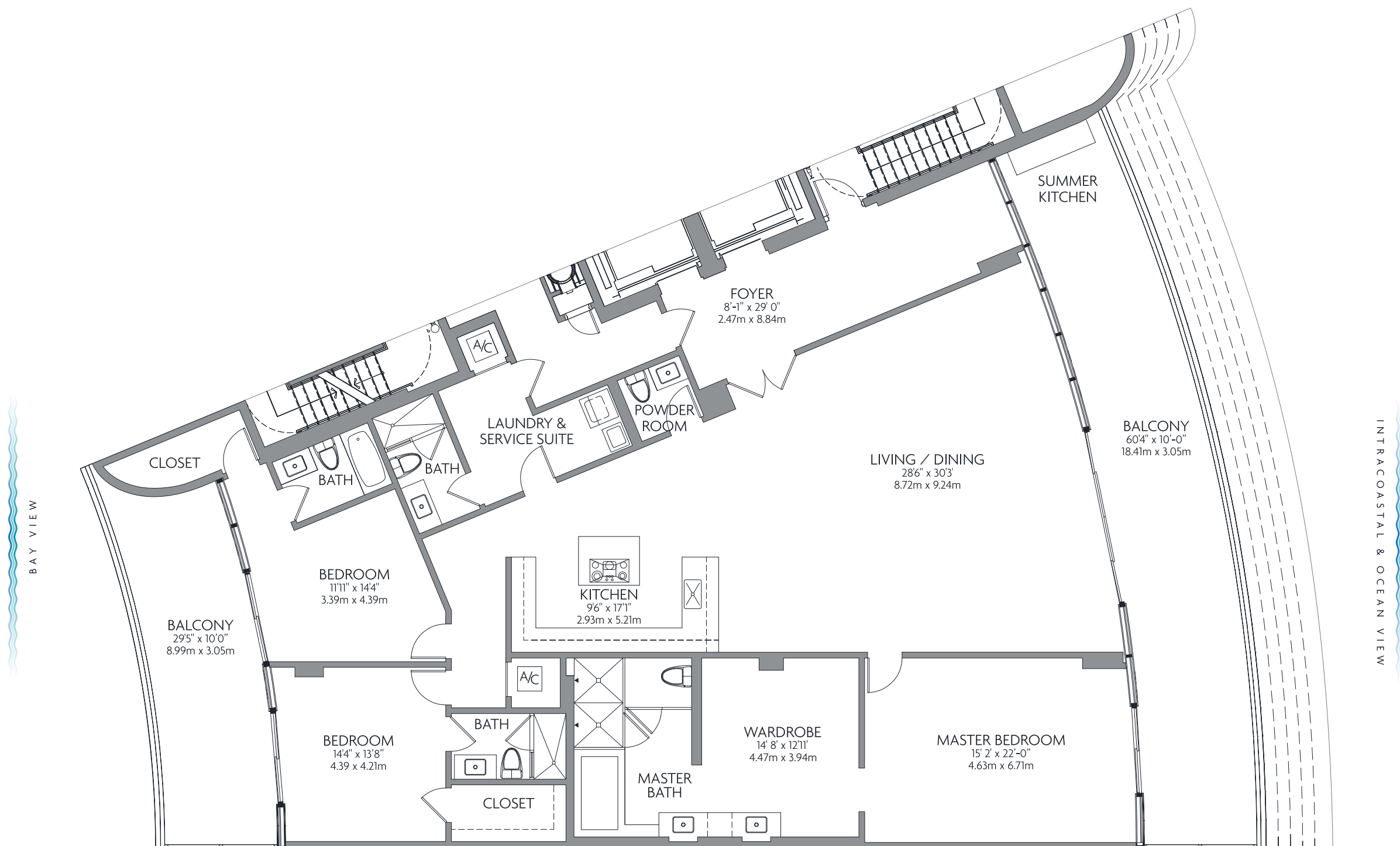
* Floor Plan shown on 10th Floor, add or subtract 59 SF / 5.5 M² per level

Privé offers 160 graciously appointed residences in two dramatically angled, 16-story buildings. Featuring flow-through layouts with soaring, ten-foot ceilings, each Privé residence offers dramatic views of both the Atlantic Ocean and the Intracoastal Waterway through expansive floor-to-ceiling windows.

Private elevator foyers lead to spacious, well-proportioned spaces ranging from 2,585 to over 9,000 square feet. Exceptional fixtures and finishes include European kitchens and baths, plus elaborate summer kitchens for outdoor entertaining on deep, private terraces.



Stated measurements and dimensions of residences are measured to the exterior boundaries of the exterior walls and the centerline of interior demising walls and in fact vary from the dimensions that would be determined by using the description and definition of the "Unit" set forth in the Declaration (which generally only includes the interior airspace between the perimeter walls and excludes all interior structural components and other common elements). This method of measurement used herein is generally used in sales materials and is provided to allow a prospective buyer to compare the Units with units in other projects that utilize the same method. Balconies are not part of the Unit. Measurements of rooms set forth on floorplans are generally taken at the farthest points of each given room (as if the room were a perfect rectangle), without regard for any cutouts or variations. Accordingly, the interior air space dimensions of the actual room will typically be smaller than the product obtained by multiplying the stated length and width. All measurements and dimensions are estimates based on preliminary plans which will vary with actual construction. All floorplans, specifications and other development plans are proposed and conceptual only, and are subject to change and will not necessarily accurately reflect the final plans and specification.



RESIDENCE B4

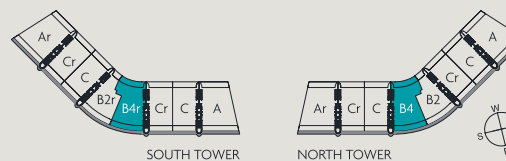
4 BEDROOMS / 5.5 BATHROOMS

INTERIOR	3,461 SF	321.54 M ²
TERRACE	1,056 SF	98.11 M ²
TOTAL *	4,517 SF	419.64 M ²

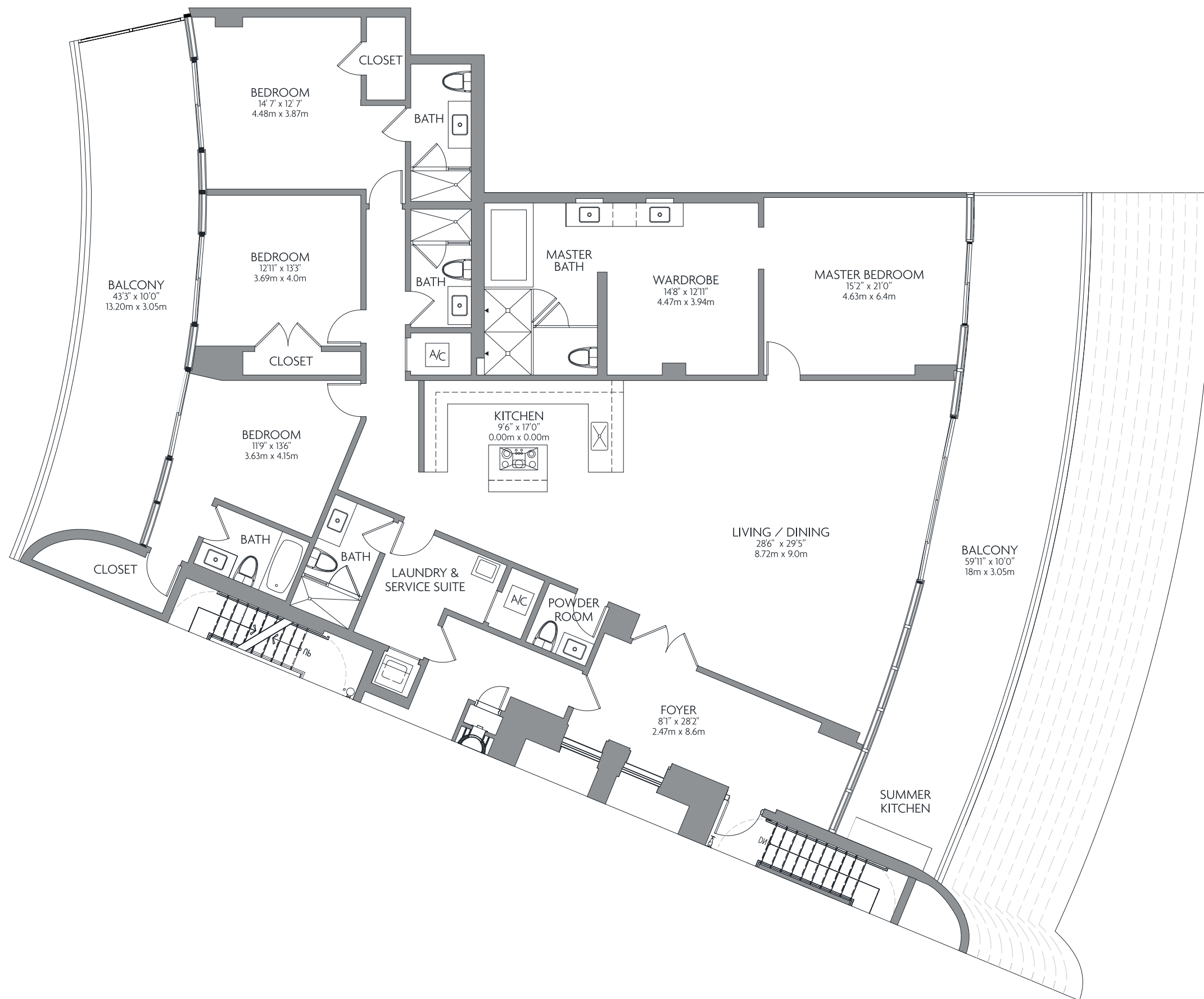
*Floor Plan shown on 9th Floor, subtract 59 SF / 5.5 M² per level

Privé offers 160 graciously appointed residences in two dramatically angled, 16-story buildings. Featuring flow-through layouts with soaring, ten-foot ceilings, each Privé residence offers dramatic views of both the Atlantic Ocean and the Intracoastal Waterway through expansive floor-to-ceiling windows.

Private elevator foyers lead to spacious, well-proportioned spaces ranging from 2,585 to over 9,000 square feet. Exceptional fixtures and finishes include European kitchens and baths, plus elaborate summer kitchens for outdoor entertaining on deep, private terraces.



Stated measurements and dimensions of residences are measured to the exterior boundaries of the exterior walls and the centerline of interior demising walls and in fact vary from the dimensions that would be determined by using the description and definition of the "Unit" set forth in the Declaration (which generally only includes the interior airspace between the perimeter walls and excludes all interior structural components and other common elements). This method of measurement used herein is generally used in sales materials and is provided to allow a prospective buyer to compare the Units with units in other projects that utilize the same method. Balconies are not part of the Unit. Measurements of rooms set forth on floorplans are generally taken at the farthest points of each given room (as if the room were a perfect rectangle), without regard for any cutouts or variations. Accordingly, the interior air space dimensions of the actual room will typically be smaller than the product obtained by multiplying the stated length and width. All measurements and dimensions are estimates based on preliminary plans which will vary with actual construction. All floorplans, specifications and other development plans are proposed and conceptual only, and are subject to change and will not necessarily accurately reflect the final plans and specification.



BAY VIEW

INTRACOASTAL & OCEAN VIEW

RESIDENCE C

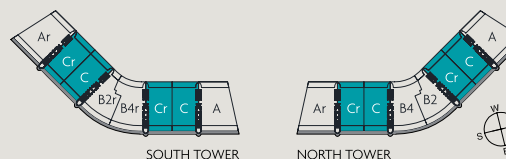
3 BEDROOMS / 4.5 BATHROOMS

INTERIOR	2,979 SF	276.76 M ²
TERRACE	854 SF	79.34 M ²
TOTAL *	3,833 SF	356.10 M ²

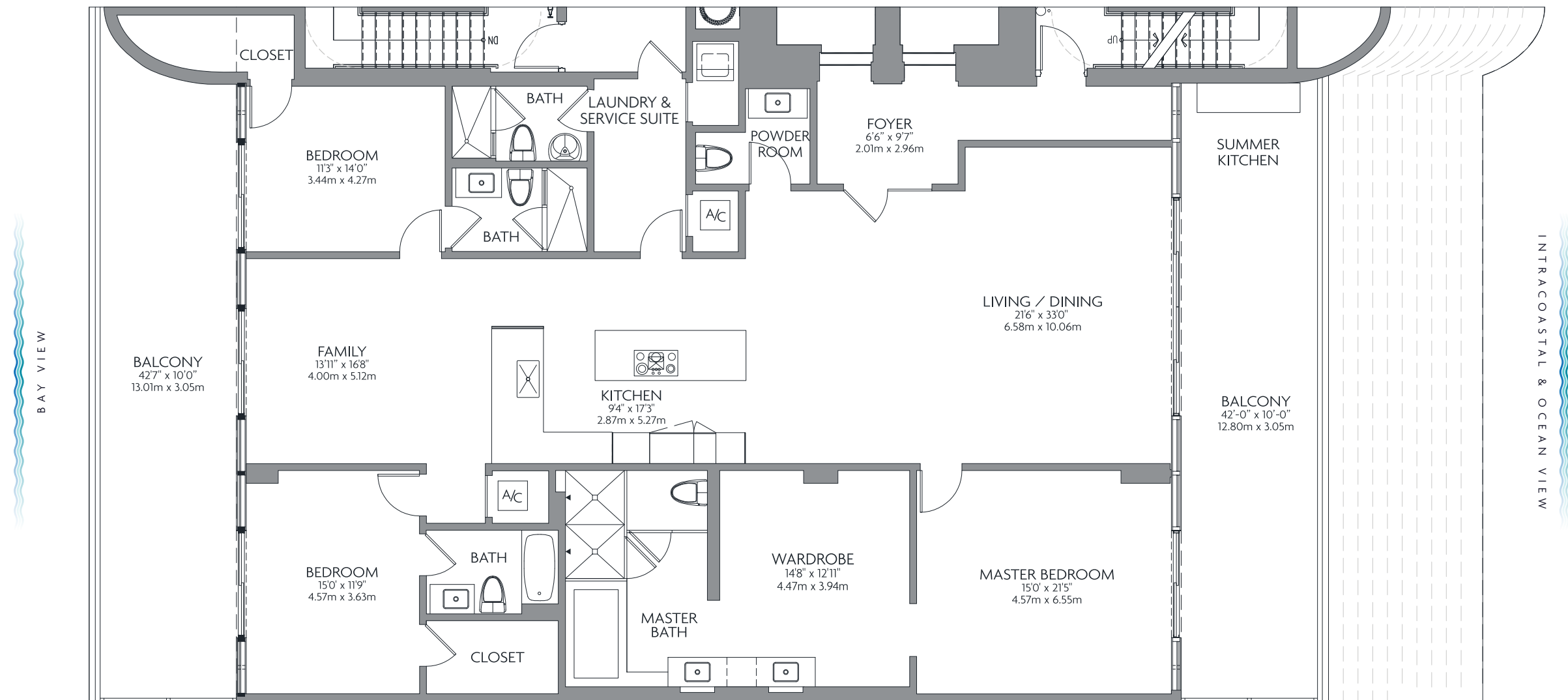
*Floor Plan shown on 9th Floor, add or subtract 43 SF / 4 M² per level

Privé offers 160 graciously appointed residences in two dramatically angled, 16-story buildings. Featuring flow-through layouts with soaring, ten-foot ceilings, each Privé residence offers dramatic views of both the Atlantic Ocean and the Intracoastal Waterway through expansive floor-to-ceiling windows.

Private elevator foyers lead to spacious, well-proportioned spaces ranging from 2,585 to over 9,000 square feet. Exceptional fixtures and finishes include European kitchens and baths, plus elaborate summer kitchens for outdoor entertaining on deep, private terraces.



Stated measurements and dimensions of residences are measured to the exterior boundaries of the exterior walls and the centerline of interior demising walls and in fact vary from the dimensions that would be determined by using the description and definition of the "Unit" set forth in the Declaration (which generally only includes the interior airspace between the perimeter walls and excludes all interior structural components and other common elements). This method of measurement used herein is generally used in sales materials and is provided to allow a prospective buyer to compare the Units with units in other projects that utilize the same method. Balconies are not part of the Unit. Measurements of rooms set forth on floorplans are generally taken at the farthest points of each given room (as if the room were a perfect rectangle), without regard for any cutouts or variations. Accordingly, the interior air space dimensions of the actual room will typically be smaller than the product obtained by multiplying the stated length and width. All measurements and dimensions are estimates based on preliminary plans which will vary with actual construction. All floorplans, specifications and other development plans are proposed and conceptual only, and are subject to change and will not necessarily accurately reflect the final plans and specification.

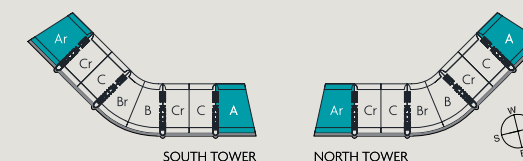


PENTHOUSE A & AR

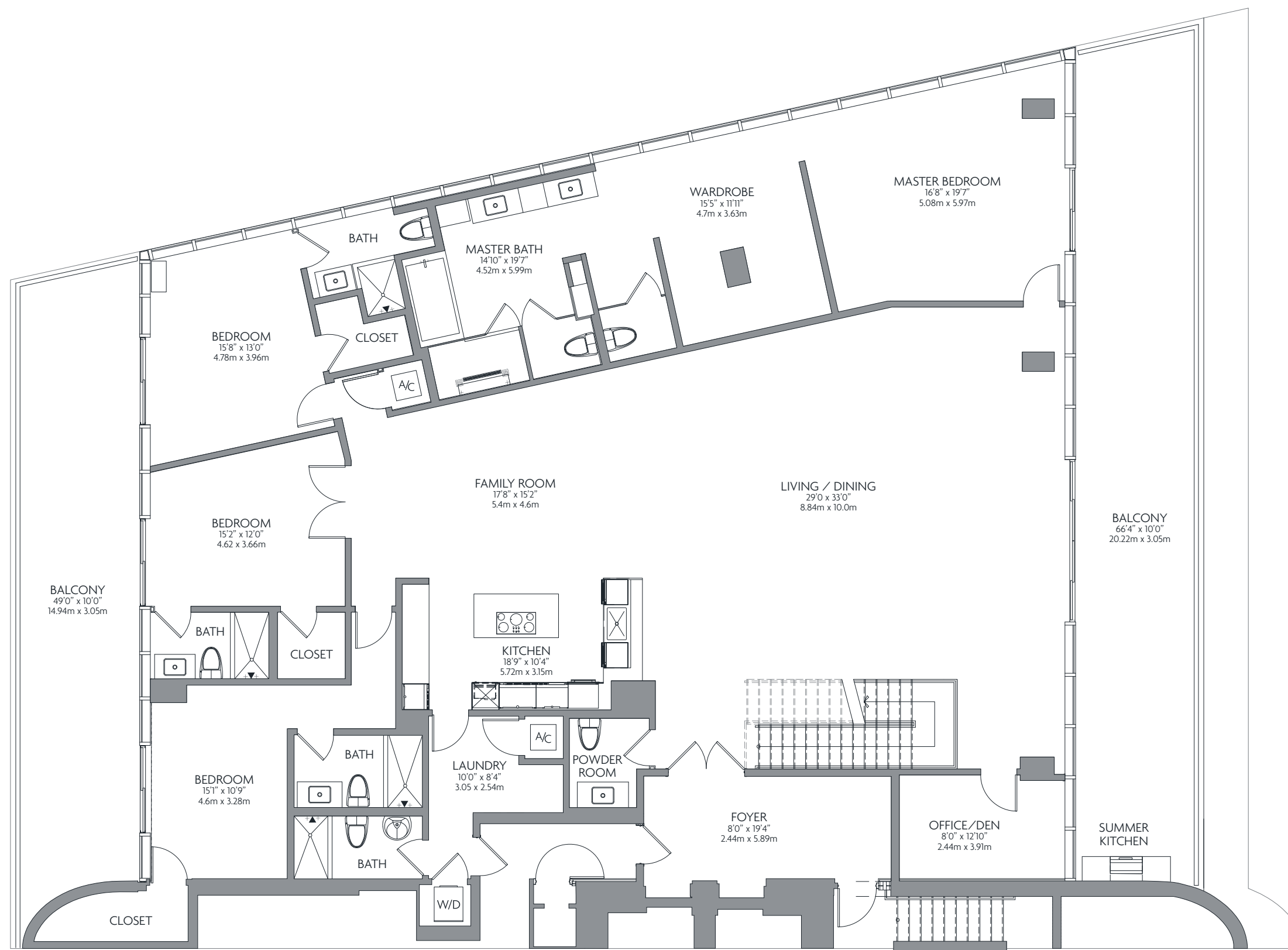
6 BEDROOMS / 8 BATHROOMS
FLOORS 15/16

INTERIOR	6,200 SF	576 M ²
TERRACE	4,622 SF	429 M ²
TOTAL	10,822 SF	1,005 M ²

The Penthouse Collection A at Privé offers an expansive duplex floor plan at the top of the towers. Over 6,200 square feet of gracious interior living space is enhanced by a private roof garden with a swimming pool and panoramic views. The Penthouse Collection lifestyle is enhanced by elevated finishes and features, and a host of exclusive privileges enjoyed by a fortunate few.



Stated measurements and dimensions of residences are measured to the exterior boundaries of the exterior walls and the centerline of interior demising walls and in fact vary from the dimensions that would be determined by using the description and definition of the "Unit" set forth in the Declaration (which generally only includes the interior airspace between the perimeter walls and excludes all interior structural components and other common elements). This method of measurement used herein is generally used in sales materials and is provided to allow a prospective buyer to compare the Units with units in other projects that utilize the same method. Balconies are not part of the Unit. Measurements of rooms set forth on floorplans are generally taken at the farthest points of each given room (as if the room were a perfect rectangle), without regard for any cutouts or variations. Accordingly, the interior air space dimensions of the actual room will typically be smaller than the product obtained by multiplying the stated length and width. All measurements and dimensions are estimates based on preliminary plans which will vary with actual construction. All floorplans, specifications and other development plans are proposed and conceptual only, and are subject to change and will not necessarily accurately reflect the final plans and specification.



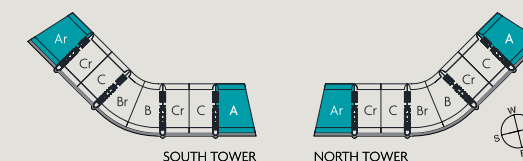
LOWER FLOOR

PENTHOUSE A & AR

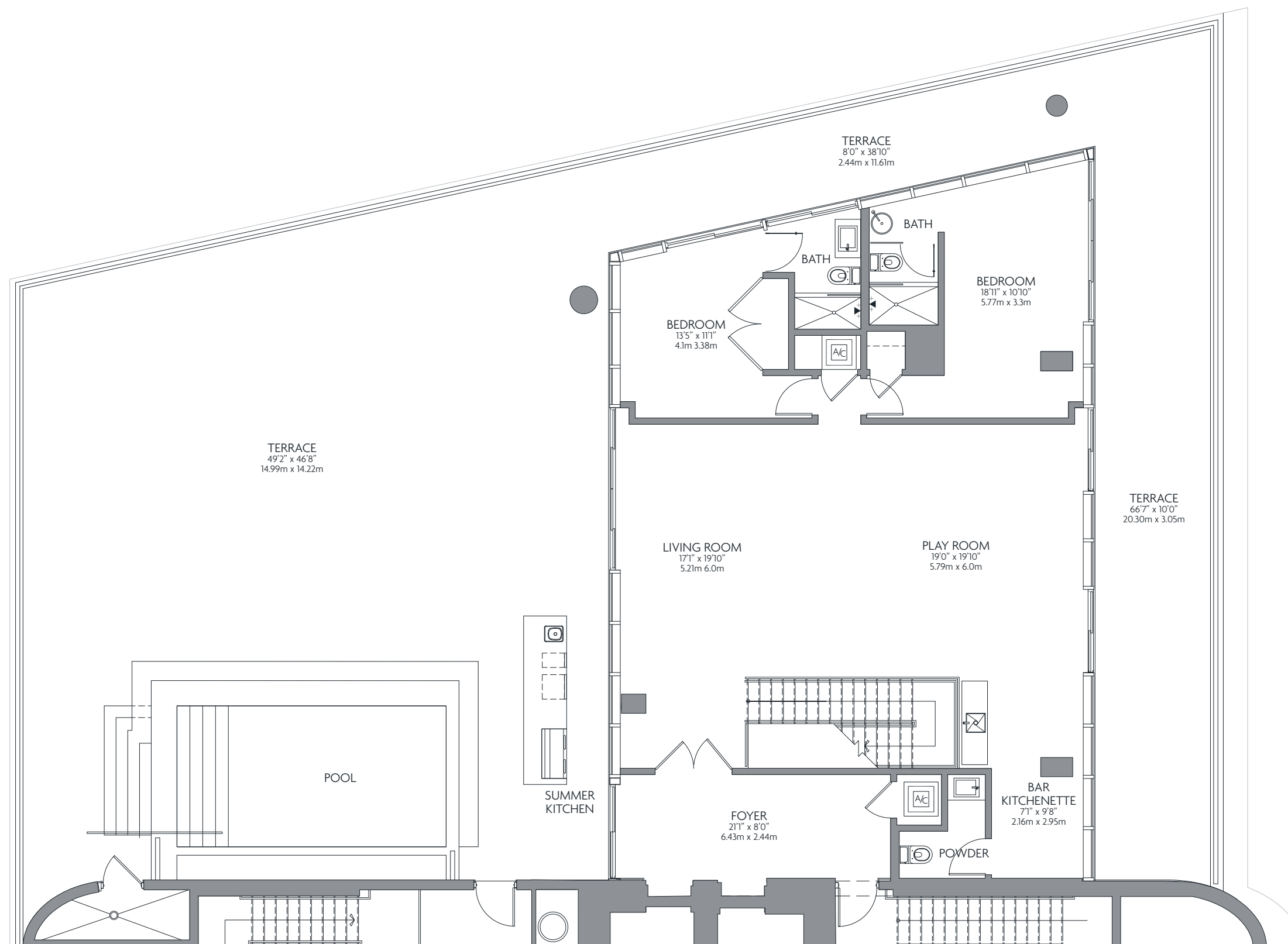
6 BEDROOMS / 8 BATHROOMS
FLOORS 15/16

INTERIOR	6,200 SF	576 M ²
TERRACE	4,622 SF	429 M ²
TOTAL	10,822 SF	1,005 M²

The Penthouse Collection A at Privé offers an expansive duplex floor plan at the top of the towers. Over 6,200 square feet of gracious interior living space is enhanced by a private roof garden with a swimming pool and panoramic views. The Penthouse Collection lifestyle is enhanced by elevated finishes and features, and a host of exclusive privileges enjoyed by a fortunate few.



Stated measurements and dimensions of residences are measured to the exterior boundaries of the exterior walls and the centerline of interior demising walls and in fact vary from the dimensions that would be determined by using the description and definition of the "Unit" set forth in the Declaration (which generally only includes the interior airspace between the perimeter walls and excludes all interior structural components and other common elements). This method of measurement used herein is generally used in sales materials and is provided to allow a prospective buyer to compare the Units with units in other projects that utilize the same method. Balconies are not part of the Unit. Measurements of rooms set forth on floorplans are generally taken at the farthest points of each given room (as if the room were a perfect rectangle), without regard for any cutouts or variations. Accordingly, the interior air space dimensions of the actual room will typically be smaller than the product obtained by multiplying the stated length and width. All measurements and dimensions are estimates based on preliminary plans which will vary with actual construction. All floorplans, specifications and other development plans are proposed and conceptual only, and are subject to change and will not necessarily accurately reflect the final plans and specification.



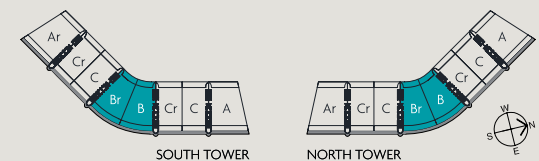
ROOFTOP

PENTHOUSE B & BR

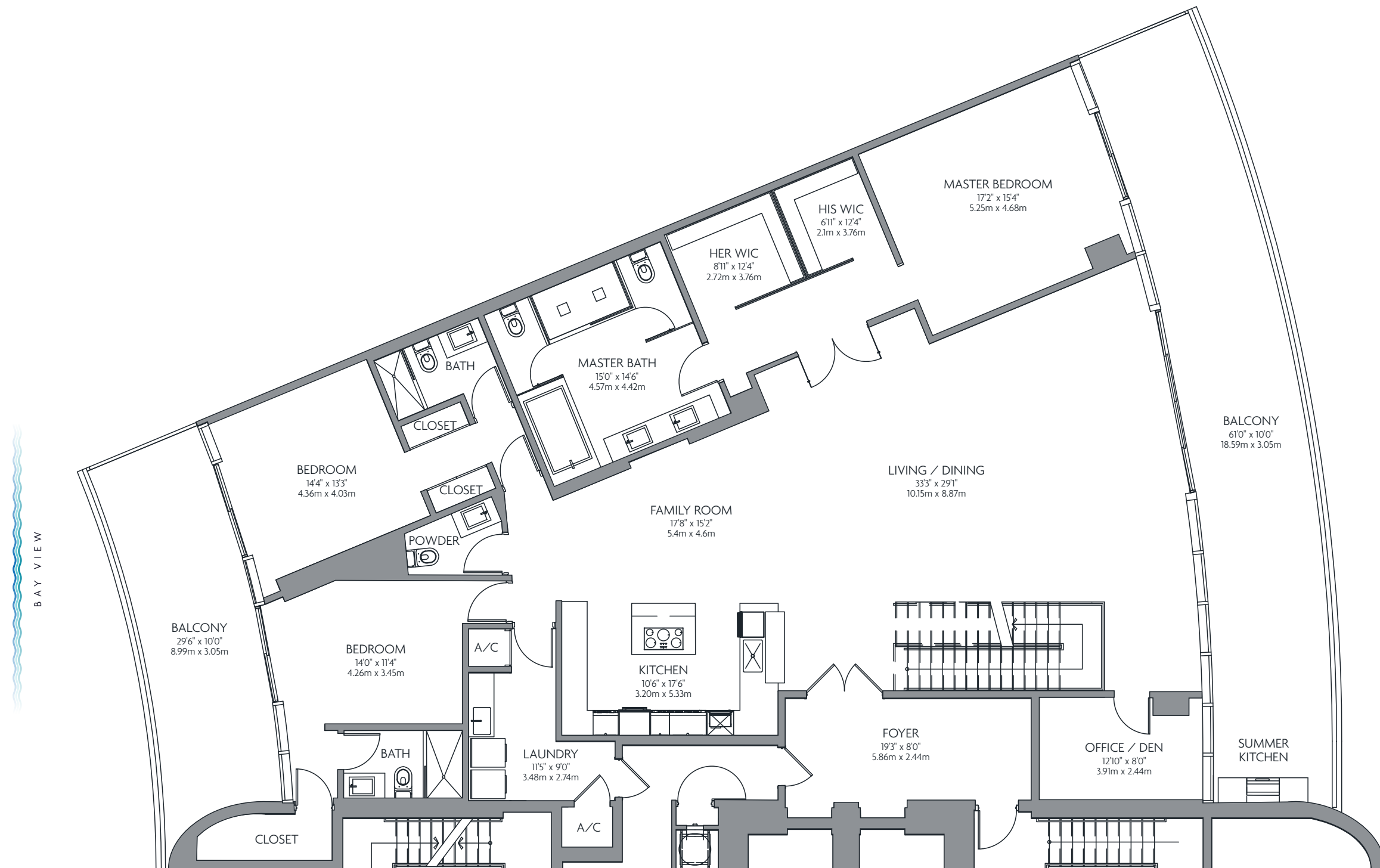
3 BEDROOMS / 5.5 BATHROOMS
FLOORS 15/16

INTERIOR	4,446 SF	413 M ²
TERRACE	2,595 SF	241 M ²
TOTAL *	7,041 SF	654 M ²

The Penthouse Collection B at Privé offers an expansive duplex floor plan at the top of the towers. Over 4,400 square feet of gracious interior living space is enhanced by a private roof garden with a swimming pool and panoramic views. The Penthouse Collection lifestyle is enhanced by elevated finishes and features, and a host of exclusive privileges enjoyed by a fortunate few.



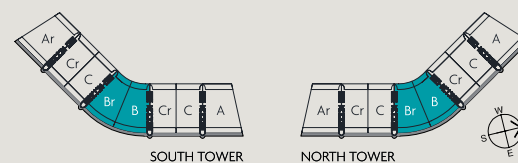
LOWER FLOOR



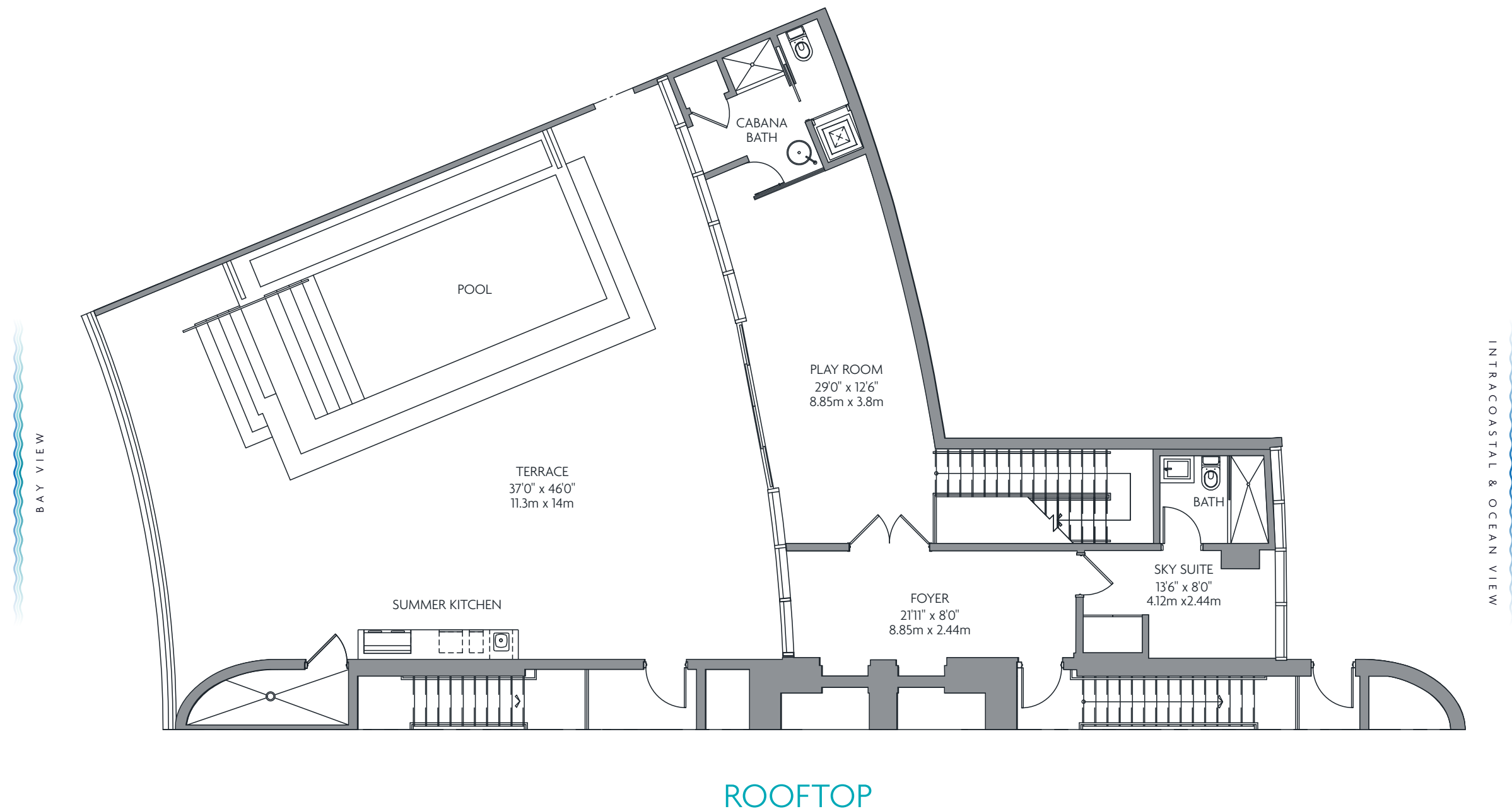
PENTHOUSE B & BR
3 BEDROOMS / 5.5 BATHROOMS
FLOORS 15/16

INTERIOR	4,446 SF	413 M ²
TERRACE	2,595 SF	241 M ²
TOTAL *	7,041 SF	654 M ²

The Penthouse Collection B at Privé offers an expansive duplex floor plan at the top of the towers. Over 4,400 square feet of gracious interior living space is enhanced by a private roof garden with a swimming pool and panoramic views. The Penthouse Collection lifestyle is enhanced by elevated finishes and features, and a host of exclusive privileges enjoyed by a fortunate few.



Stated measurements and dimensions of residences are measured to the exterior boundaries of the exterior walls and the centerline of interior demising walls and in fact vary from the dimensions that would be determined by using the description and definition of the "Unit" set forth in the Declaration (which generally only includes the interior airspace between the perimeter walls and excludes all interior structural components and other common elements). This method of measurement used herein is generally used in sales materials and is provided to allow a prospective buyer to compare the Units with units in other projects that utilize the same method. Balconies are not part of the Unit. Measurements of rooms set forth on floorplans are generally taken at the farthest points of each given room (as if the room were a perfect rectangle), without regard for any cutouts or variations. Accordingly, the interior air space dimensions of the actual room will typically be smaller than the product obtained by multiplying the stated length and width. All measurements and dimensions are estimates based on preliminary plans which will vary with actual construction. All floorplans, specifications and other development plans are proposed and conceptual only, and are subject to change and will not necessarily accurately reflect the final plans and specification.



SOLD OUT

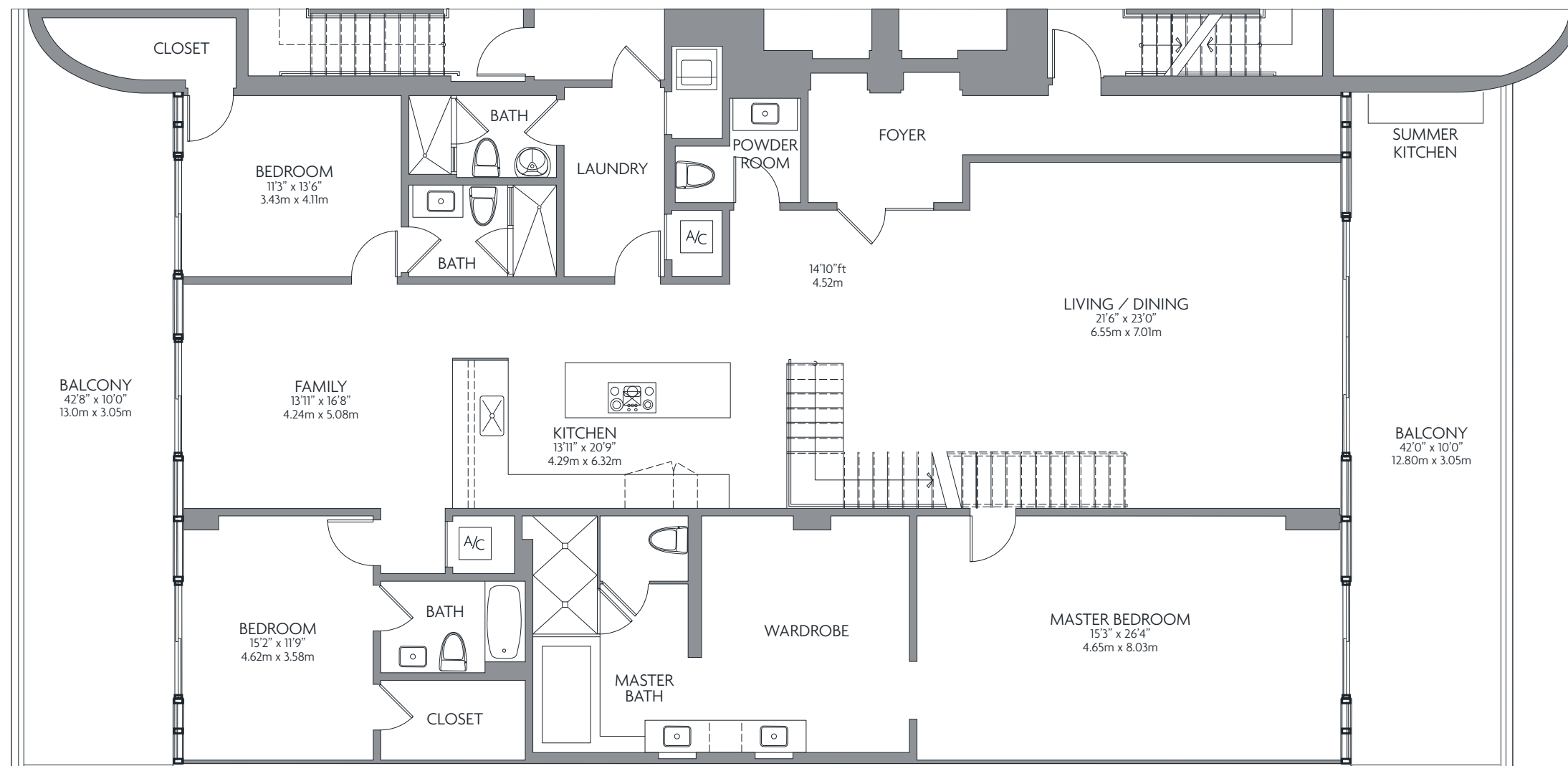
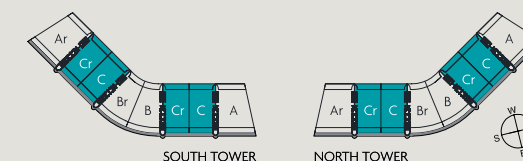
SOLD OUT

PENTHOUSE C
5 BEDROOMS / 6.5 BATHROOMS

INTERIOR	4,768 SF	442.95 M ²
TERRACE	3,284 SF	305.08 M ²
TOTAL *	8,052 SF	748.03 M ²

Privé offers 160 graciously appointed residences in two dramatically angled, 16-story buildings. Featuring flow-through layouts with soaring 10- to 17-foot ceilings, each Privé residence offers dramatic views of both the Atlantic Ocean and the Intracoastal Waterway through expansive floor-to-ceiling windows.

Private elevator foyers lead to spacious, well-proportioned spaces ranging from 2,585 to over 9,000 square feet. Exceptional fixtures and finishes include European kitchens and baths, plus elaborate summer kitchens for outdoor entertaining on deep, private terraces.



LOWER FLOOR

Stated measurements and dimensions of residences are measured to the exterior boundaries of the exterior walls and the centerline of interior demising walls and in fact vary from the dimensions that would be determined by using the description and definition of the "Unit" set forth in the Declaration (which generally only includes the interior airspace between the perimeter walls and excludes all interior structural components and other common elements). This method of measurement used herein is generally used in sales materials and is provided to allow a prospective buyer to compare the Units with units in other projects that utilize the same method. Balconies are not part of the Unit. Measurements of rooms set forth on floorplans are generally taken at the farthest points of each given room (as if the room were a perfect rectangle), without regard for any cutouts or variations. Accordingly, the interior air space dimensions of the actual room will typically be smaller than the product obtained by multiplying the stated length and width. All measurements and dimensions are estimates based on preliminary plans which will vary with actual construction. All floorplans, specifications and other development plans are proposed and conceptual only, and are subject to change and will not necessarily accurately reflect the final plans and specification.

SOLD OUT

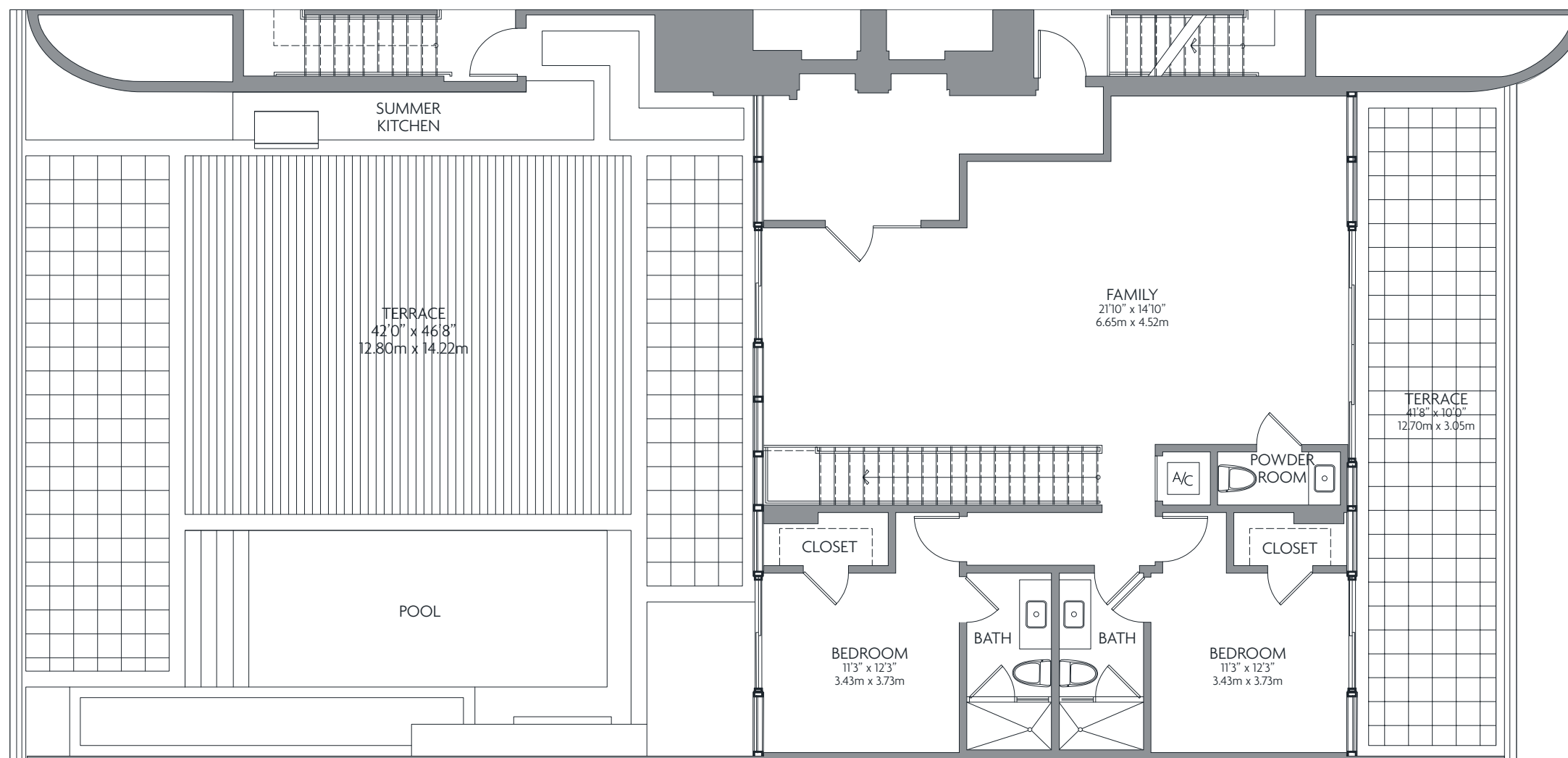
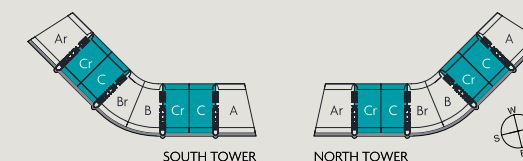
SOLD OUT

PENTHOUSE C
5 BEDROOMS / 6.5 BATHROOMS

INTERIOR	4,768 SF	442.95 M ²
TERRACE	3,284 SF	305.08 M ²
TOTAL *	8,052 SF	748.03 M ²

Privé offers 160 graciously appointed residences in two dramatically angled, 16-story buildings. Featuring flow-through layouts with soaring 10- to 17-foot ceilings, each Privé residence offers dramatic views of both the Atlantic Ocean and the Intracoastal Waterway through expansive floor-to-ceiling windows.

Private elevator foyers lead to spacious, well-proportioned spaces ranging from 2,585 to over 9,000 square feet. Exceptional fixtures and finishes include European kitchens and baths, plus elaborate summer kitchens for outdoor entertaining on deep, private terraces.



ROOFTOP

Stated measurements and dimensions of residences are measured to the exterior boundaries of the exterior walls and the centerline of interior demising walls and in fact vary from the dimensions that would be determined by using the description and definition of the "Unit" set forth in the Declaration (which generally only includes the interior airspace between the perimeter walls and excludes all interior structural components and other common elements). This method of measurement used herein is generally used in sales materials and is provided to allow a prospective buyer to compare the Units with units in other projects that utilize the same method. Balconies are not part of the Unit. Measurements of rooms set forth on floorplans are generally taken at the farthest points of each given room (as if the room were a perfect rectangle), without regard for any cutouts or variations. Accordingly, the interior air space dimensions of the actual room will typically be smaller than the product obtained by multiplying the stated length and width. All measurements and dimensions are estimates based on preliminary plans which will vary with actual construction. All floorplans, specifications and other development plans are proposed and conceptual only, and are subject to change and will not necessarily accurately reflect the final plans and specification.

SOLD OUT

PRIVÉ[®]

AN ISLAND BEYOND EXTRAORDINARY

SOLD OUT

RESERVE COLLECTION B

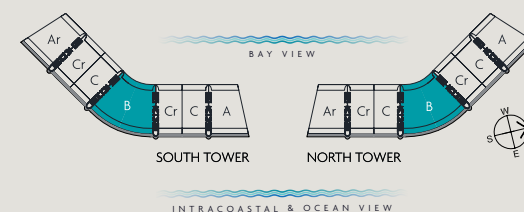
5 BEDROOMS / 6 BATHROOMS

INTERIOR	6,295 SF	585 M ²
TERRACE	1,807 SF	168 M ²
TOTAL *	8,102 SF	753 M ²

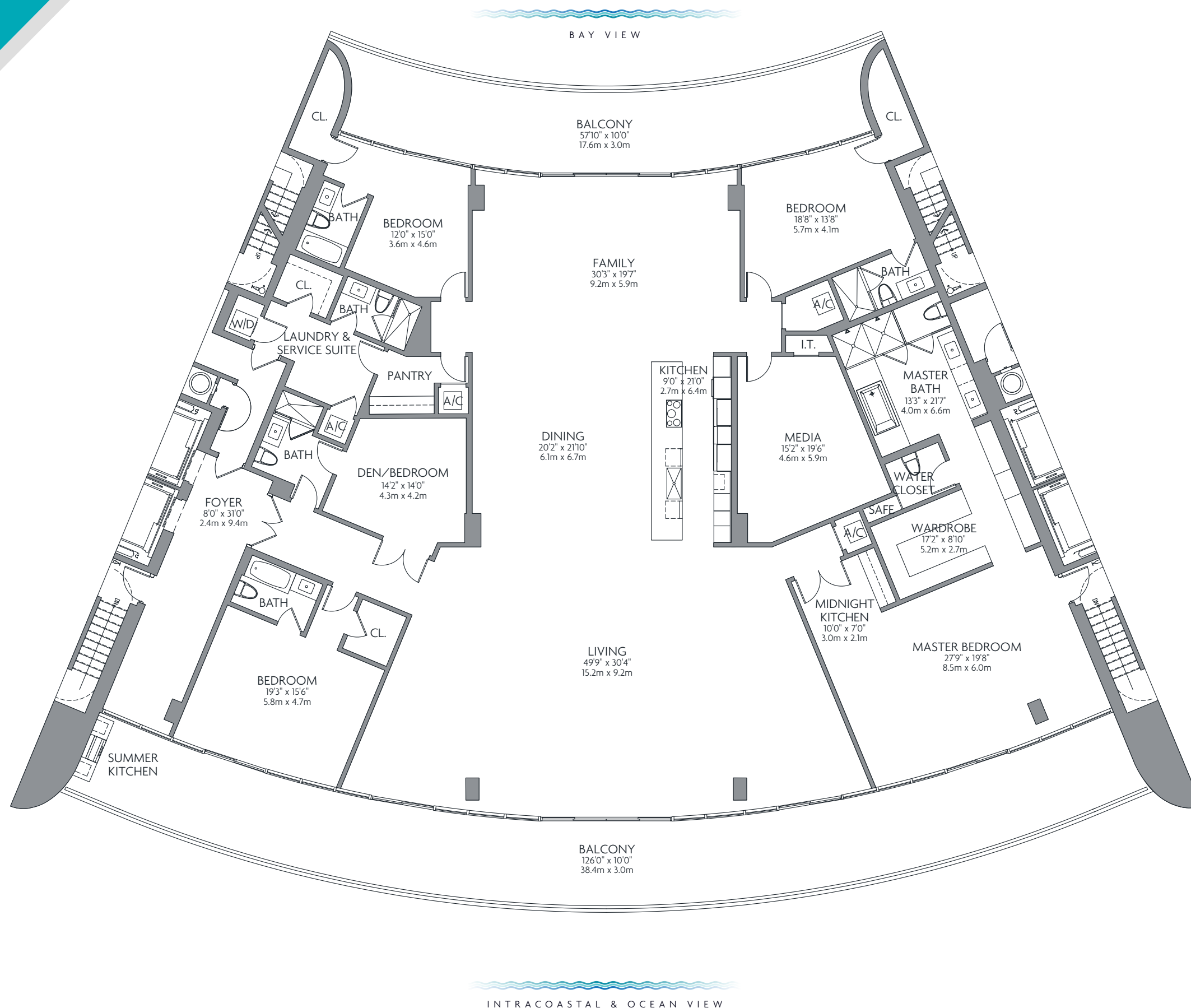
*Floor Plan shown on 9th Floor, add or subtract 118 SF / 11 M² per level

The Reserve Collection Residence B offers roughly 6,000 square feet of palatial living enhanced by elevated finishes and features, along with a host of luxuries and privileges exclusive to the Reserve Collection, including:

- Parking for four vehicles
- Expansive custom kitchens
- Butler's pantry
- Wine cellar
- Service suite
- Master suite with midnight kitchen
- Office/den
- Media room
- Expansive closets
- Family room



Stated measurements and dimensions of residences are measured to the exterior boundaries of the exterior walls and the centerline of interior demising walls and in fact vary from the dimensions that would be determined by using the description and definition of the "Unit" set forth in the Declaration (which generally only includes the interior airspace between the perimeter walls and excludes all interior structural components and other common elements). This method of measurement used herein is generally used in sales materials and is provided to allow a prospective buyer to compare the Units with units in other projects that utilize the same method. Balconies are not part of the Unit. Measurements of rooms set forth on floorplans are generally taken at the farthest points of each given room (as if the room were a perfect rectangle), without regard for any cutouts or variations. Accordingly, the interior air space dimensions of the actual room will typically be smaller than the product obtained by multiplying the stated length and width. All measurements and dimensions are estimates based on preliminary plans which will vary with actual construction. All floorplans, specifications and other development plans are proposed and conceptual only, and are subject to change and will not necessarily accurately reflect the final plans and specification.



SOLD OUT

PRIVÉ®

AN ISLAND BEYOND EXTRAORDINARY

SOLD OUT

RESERVE COLLECTION C

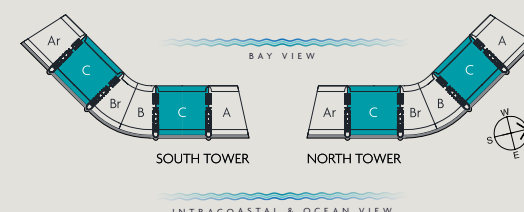
4 BEDROOMS / 4.5 BATHROOMS

INTERIOR	5,990 SF	556 M ²
TERRACE	1,708 SF	159 M ²
TOTAL *	7,698 SF	715 M ²

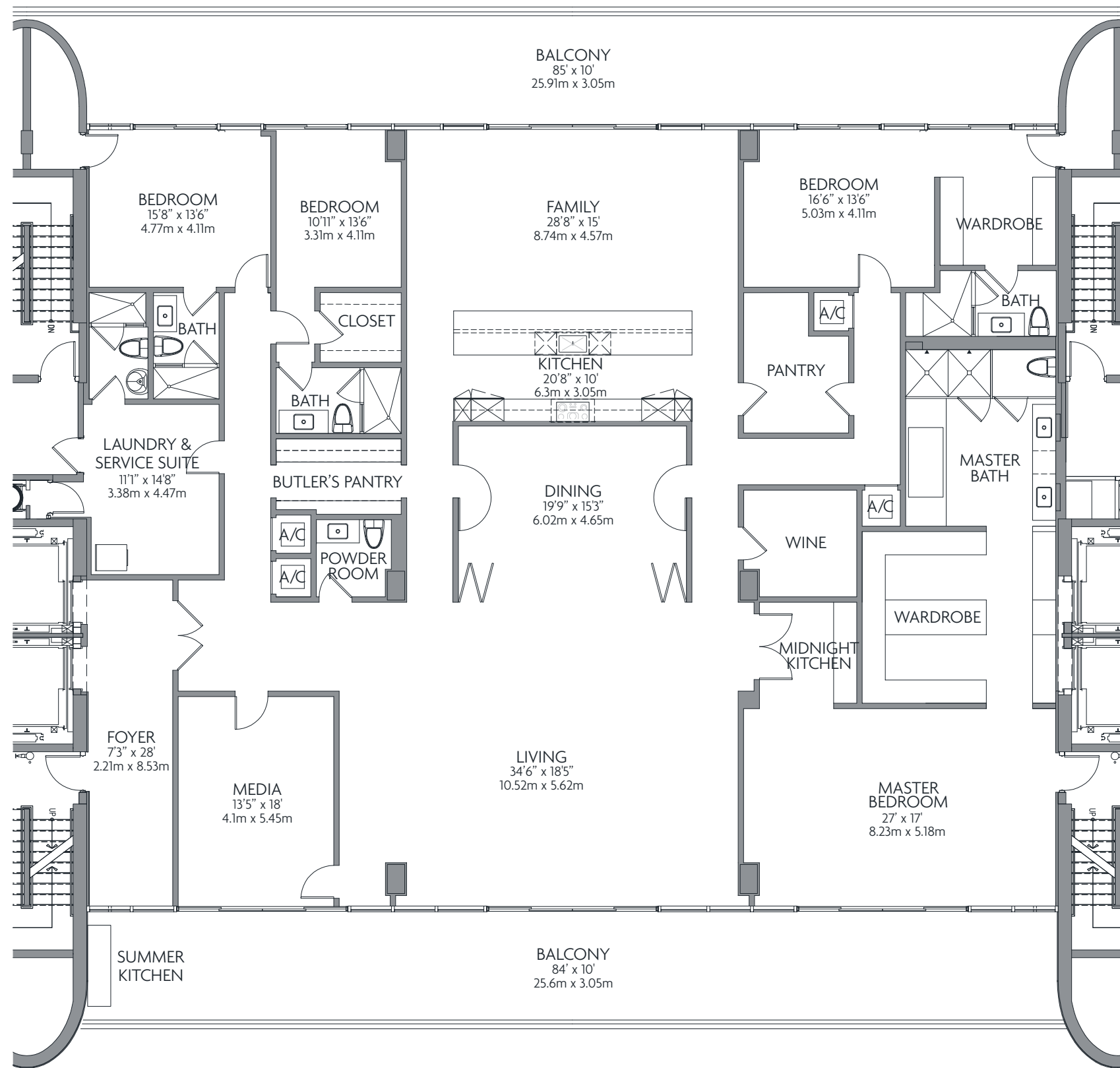
*Floor Plan shown on 9th Floor, add or subtract 86 SF / 8 M² per level

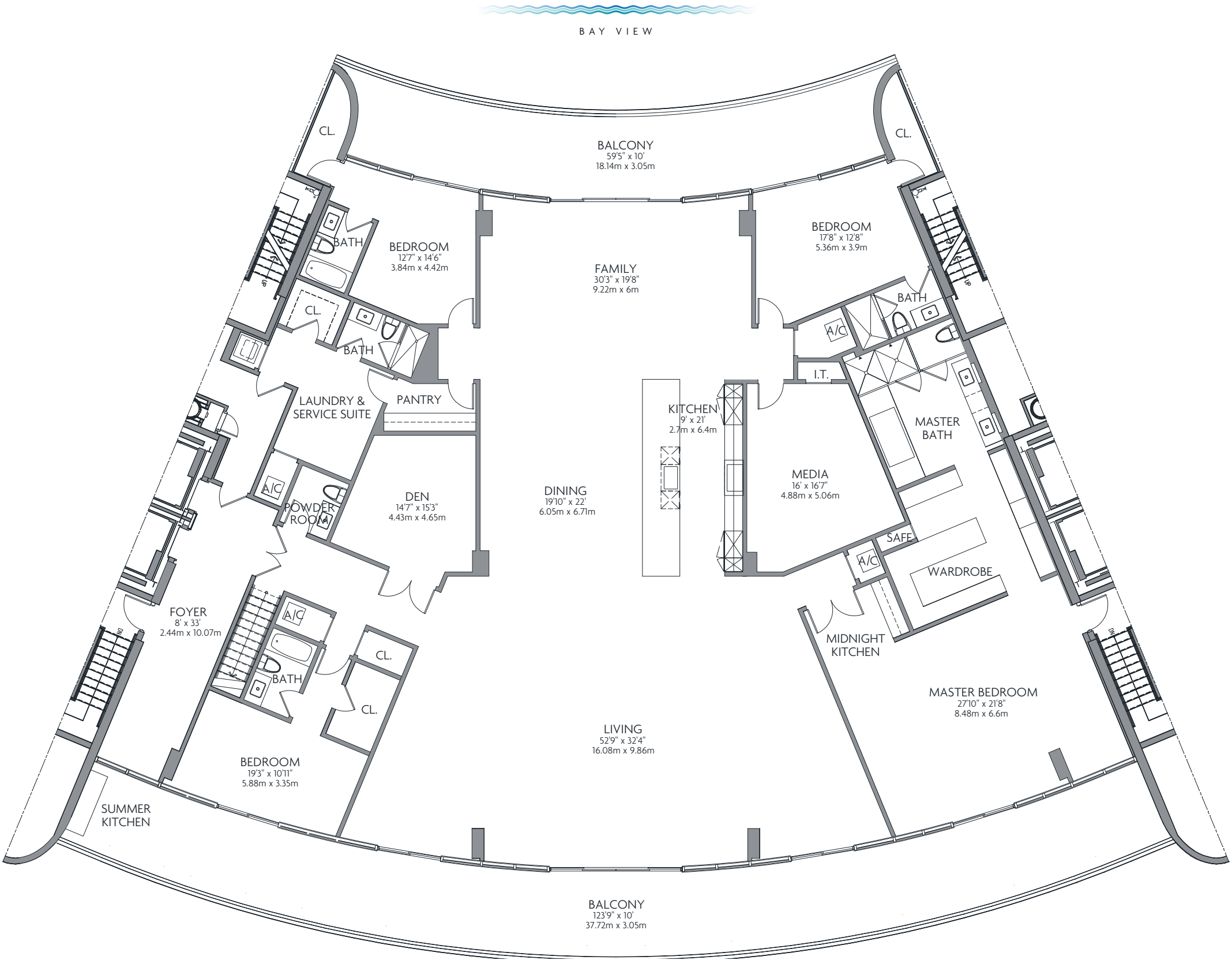
The Reserve Collection Residence C offers roughly 6,000 square feet of palatial living enhanced by elevated finishes and features, along with a host of luxuries and privileges exclusive to the Reserve Collection, including:

- Parking for four vehicles
- Expansive custom kitchens
- Butler's pantry
- Wine cellar
- Service suite
- Master suite with midnight kitchen
- Office/den
- Media room
- Expansive closets
- Family room



Stated measurements and dimensions of residences are measured to the exterior boundaries of the exterior walls and the centerline of interior demising walls and in fact vary from the dimensions that would be determined by using the description and definition of the "Unit" set forth in the Declaration (which generally only includes the interior airspace between the perimeter walls and excludes all interior structural components and other common elements). This method of measurement used herein is generally used in sales materials and is provided to allow a prospective buyer to compare the Units with units in other projects that utilize the same method. Balconies are not part of the Unit. Measurements of rooms set forth on floorplans are generally taken at the farthest points of each given room (as if the room were a perfect rectangle), without regard for any cutouts or variations. Accordingly, the interior air space dimensions of the actual room will typically be smaller than the product obtained by multiplying the stated length and width. All measurements and dimensions are estimates based on preliminary plans which will vary with actual construction. All floorplans, specifications and other development plans are proposed and conceptual only, and are subject to change and will not necessarily accurately reflect the final plans and specification.





LOWER FLOOR

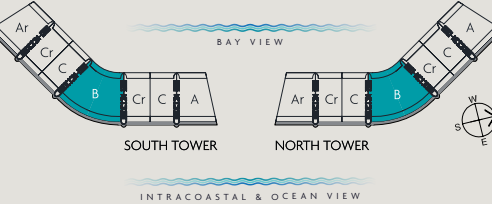
SKY RESIDENCE B PENTHOUSE

4 BEDROOMS / 6.5 BATHROOMS

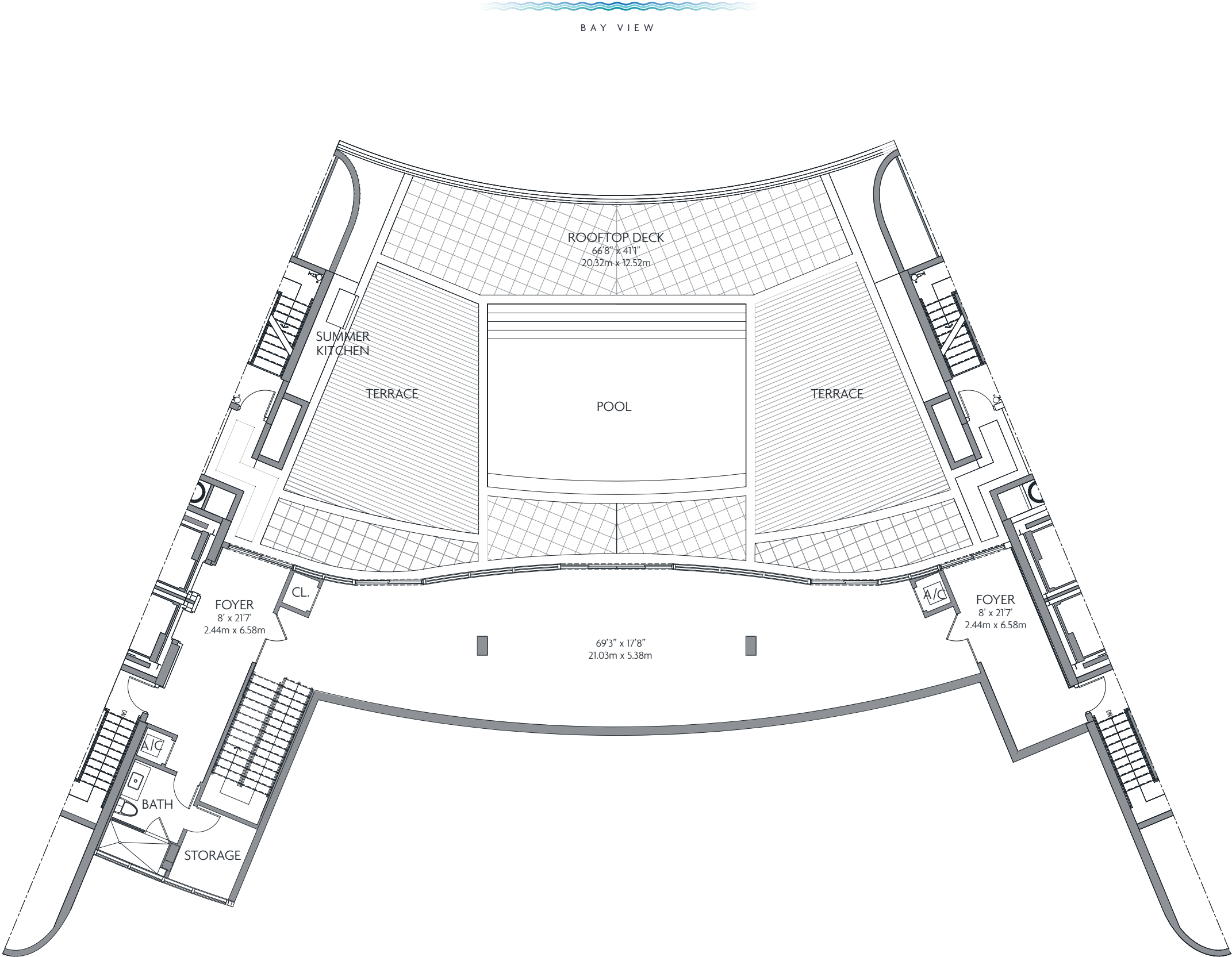
INTERIOR	8,476 SF	787 M ²
TERRACE	5,266 SF	489 M ²
TOTAL *	13,742 SF	1,277 M ²

The Sky Residence B at Privé offers an expansive duplex floor plan at the top of the towers. Over 8,400 square feet of gracious interior living space is enhanced by a private roof garden with a full-size swimming pool and panoramic views. The Sky Residence lifestyle is enhanced by elevated finishes and features, and a host of exclusive privileges enjoyed by a fortunate few.

- 10- to 17-foot ceilings throughout
- Parking for six vehicles
- Expansive custom kitchens
- Butler's pantry
- Wine cellar
- Service suite
- Master suite with midnight kitchen
- Media room
- Expansive closets
- Family room
- Full-size rooftop pool
- Office/Den



Stated measurements and dimensions of residences are measured to the exterior boundaries of the exterior walls and the centerline of interior demising walls and in fact vary from the dimensions that would be determined by using the description and definition of the "Unit" set forth in the Declaration (which generally only includes the interior airspace between the perimeter walls and excludes all interior structural components and other common elements). This method of measurement used herein is generally used in sales materials and is provided to allow a prospective buyer to compare the Units with units in other projects that utilize the same method. Balconies are not part of the Unit. Measurements of rooms set forth on floorplans are generally taken at the farthest points of each given room (as if the room were a perfect rectangle), without regard for any cutouts or variations. Accordingly, the interior air space dimensions of the actual room will typically be smaller than the product obtained by multiplying the stated length and width. All measurements and dimensions are estimates based on preliminary plans which will vary with actual construction. All floorplans, specifications and other development plans are proposed and conceptual only, and are subject to change and will not necessarily accurately reflect the final plans and specification.



BAY VIEW

ROOFTOP

INTRACOASTAL & OCEAN VIEW

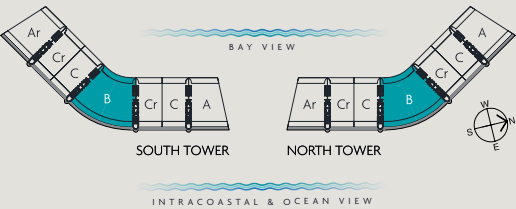
SKY RESIDENCE B
PENTHOUSE

4 BEDROOMS / 6.5 BATHROOMS

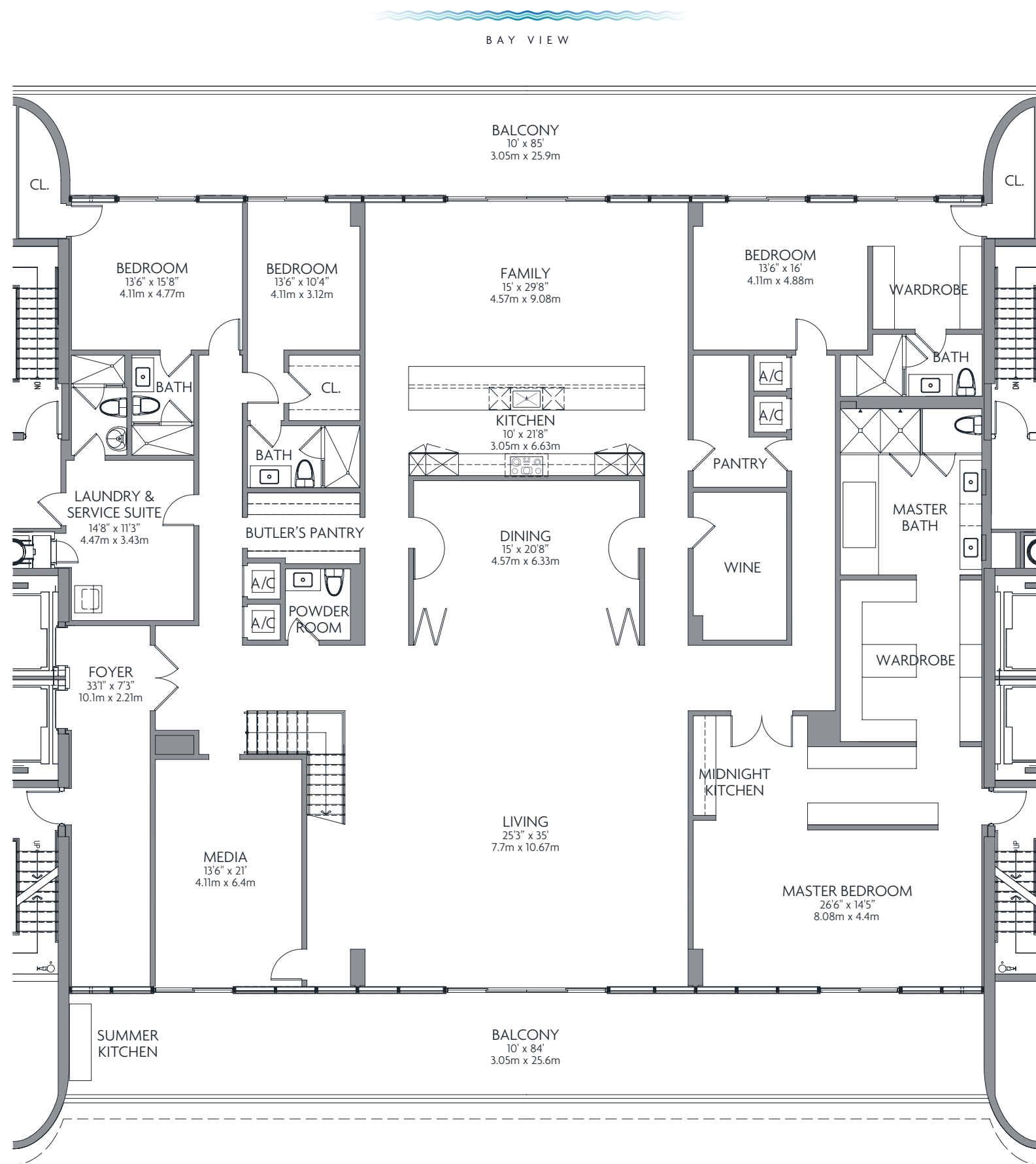
INTERIOR	8,476 SF	787 M ²
TERRACE	5,266 SF	489 M ²
TOTAL *	13,742 SF	1,277 M ²

The Sky Residence B at Privé offers an expansive duplex floor plan at the top of the towers. Over 8,400 square feet of gracious interior living space is enhanced by a private roof garden with a full-size swimming pool and panoramic views. The Sky Residence lifestyle is enhanced by elevated finishes and features, and a host of exclusive privileges enjoyed by a fortunate few.

- 10- to 17-foot ceilings throughout
- Parking for six vehicles
- Expansive custom kitchens
- Butler's pantry
- Wine cellar
- Service suite
- Master suite with midnight kitchen
- Media room
- Expansive closets
- Family room
- Full-size rooftop pool
- Office/Den



Stated measurements and dimensions of residences are measured to the exterior boundaries of the exterior walls and the centerline of interior demising walls and in fact vary from the dimensions that would be determined by using the description and definition of the "Unit" set forth in the Declaration (which generally only includes the interior airspace between the perimeter walls and excludes all interior structural components and other common elements). This method of measurement used herein is generally used in sales materials and is provided to allow a prospective buyer to compare the Units with units in other projects that utilize the same method. Balconies are not part of the Unit. Measurements of rooms set forth on floorplans are generally taken at the farthest points of each given room (as if the room were a perfect rectangle), without regard for any cutouts or variations. Accordingly, the interior air space dimensions of the actual room will typically be smaller than the product obtained by multiplying the stated length and width. All measurements and dimensions are estimates based on preliminary plans which will vary with actual construction. All floorplans, specifications and other development plans are proposed and conceptual only, and are subject to change and will not necessarily accurately reflect the final plans and specification.



LOWER FLOOR

INTRACOASTAL & OCEAN VIEW

PRIVÉ
AN ISLAND BEYOND EXTRAORDINARY

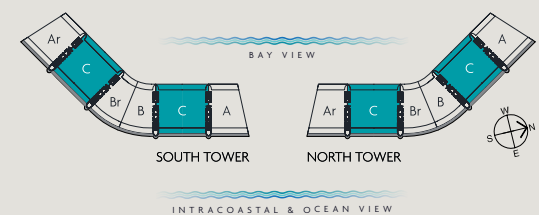
SKY RESIDENCE C PENTHOUSE

7 BEDROOMS / 7.5 BATHROOMS

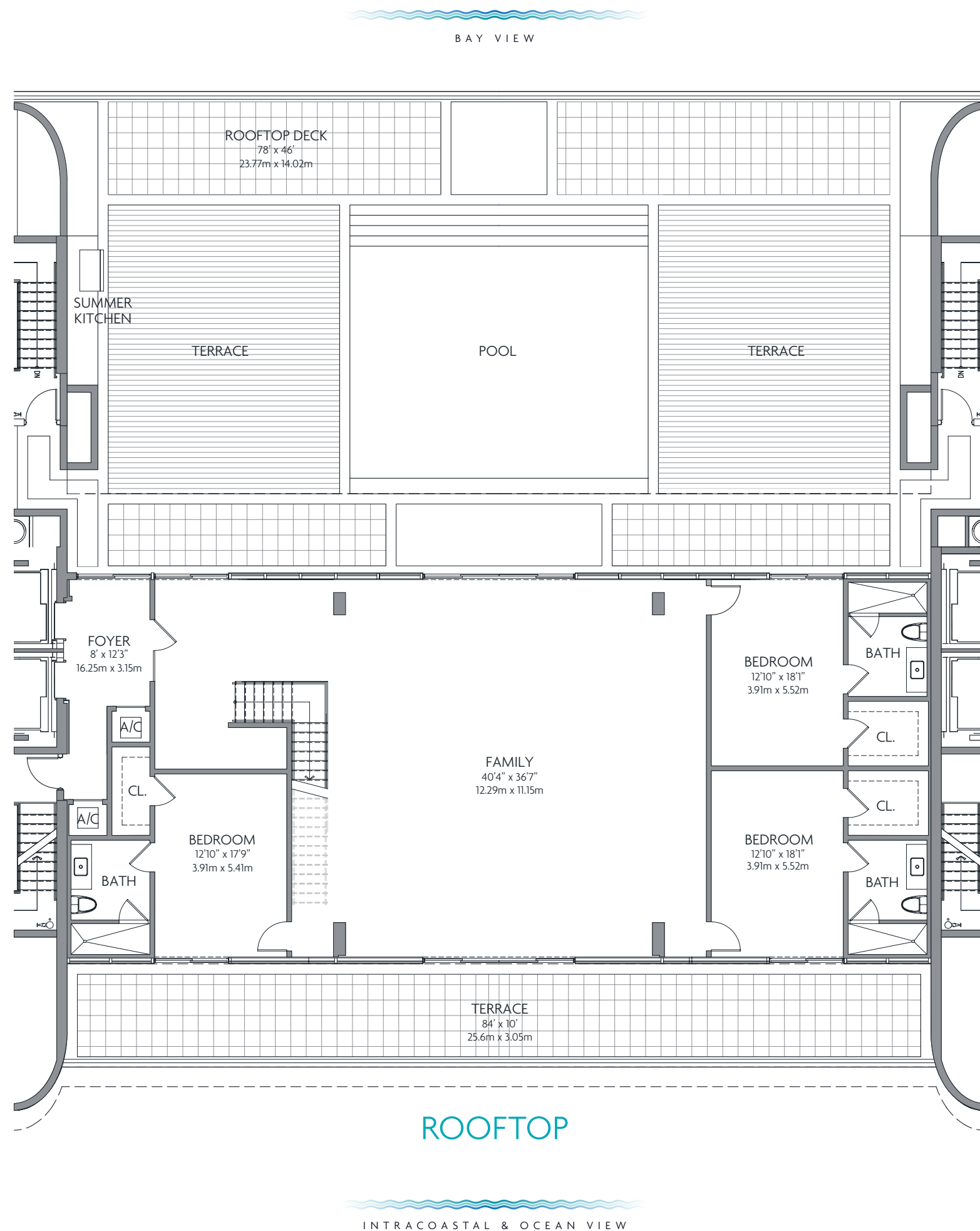
INTERIOR	9,536 SF	886 M ²
TERRACE	6,568 SF	610 M ²
TOTAL *	16,104 SF	1,496 M ²

The Sky Residence C at Privé offers an expansive duplex floor plan at the top of the towers. Over 9,500 square feet of gracious interior living space is enhanced by a private roof garden with a full-size swimming pool and panoramic views. The Sky Residence lifestyle is enhanced by elevated finishes and features, and a host of exclusive privileges enjoyed by a fortunate few.

- 10- to 17-foot ceilings throughout
- Parking for six vehicles
- Expansive custom kitchens
- Butler's pantry
- Wine cellar
- Service suite
- Master suite with midnight kitchen
- Media room
- Expansive closets
- Family room
- Full-size rooftop pool



Stated measurements and dimensions of residences are measured to the exterior boundaries of the exterior walls and the centerline of interior demising walls and in fact vary from the dimensions that would be determined by using the description and definition of the "Unit" set forth in the Declaration (which generally only includes the interior airspace between the perimeter walls and excludes all interior structural components and other common elements). This method of measurement used herein is generally used in sales materials and is provided to allow a prospective buyer to compare the Units with units in other projects that utilize the same method. Balconies are not part of the Unit. Measurements of rooms set forth on floorplans are generally taken at the farthest points of each given room (as if the room were a perfect rectangle), without regard for any cutouts or variations. Accordingly, the interior air space dimensions of the actual room will typically be smaller than the product obtained by multiplying the stated length and width. All measurements and dimensions are estimates based on preliminary plans which will vary with actual construction. All floorplans, specifications and other development plans are proposed and conceptual only, and are subject to change and will not necessarily accurately reflect the final plans and specification.



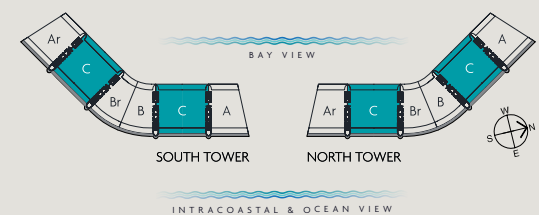
SKY RESIDENCE C PENTHOUSE

7 BEDROOMS / 7.5 BATHROOMS

INTERIOR	9,536 SF	886 M ²
TERRACE	6,568 SF	610 M ²
TOTAL *	16,104 SF	1,496 M ²

The Sky Residence C at Privé offers an expansive duplex floor plan at the top of the towers. Over 9,500 square feet of gracious interior living space is enhanced by a private roof garden with a full-size swimming pool and panoramic views. The Sky Residence lifestyle is enhanced by elevated finishes and features, and a host of exclusive privileges enjoyed by a fortunate few.

- 10- to 17-foot ceilings throughout
- Parking for six vehicles
- Expansive custom kitchens
- Butler's pantry
- Wine cellar
- Service suite
- Master suite with midnight kitchen
- Media room
- Expansive closets
- Family room
- Full-size rooftop pool



Stated measurements and dimensions of residences are measured to the exterior boundaries of the exterior walls and the centerline of interior demising walls and in fact vary from the dimensions that would be determined by using the description and definition of the "Unit" set forth in the Declaration (which generally only includes the interior airspace between the perimeter walls and excludes all interior structural components and other common elements). This method of measurement used herein is generally used in sales materials and is provided to allow a prospective buyer to compare the Units with units in other projects that utilize the same method. Balconies are not part of the Unit. Measurements of rooms set forth on floorplans are generally taken at the farthest points of each given room (as if the room were a perfect rectangle), without regard for any cutouts or variations. Accordingly, the interior air space dimensions of the actual room will typically be smaller than the product obtained by multiplying the stated length and width. All measurements and dimensions are estimates based on preliminary plans which will vary with actual construction. All floorplans, specifications and other development plans are proposed and conceptual only, and are subject to change and will not necessarily accurately reflect the final plans and specification.



www.mypriveisland.com

866.260.7214

5000 Island Estates Drive, Aventura, Florida 33160

 **ORAL REPRESENTATIONS CANNOT BE RELIED UPON AS CORRECTLY STATING THE REPRESENTATIONS OF THE DEVELOPER. FOR CORRECT REPRESENTATIONS, MAKE REFERENCE TO THIS BROCHURE AND TO THE DOCUMENTS REQUIRED BY SECTION 718.503, FLORIDA STATUTES, TO BE FURNISHED BY A DEVELOPER TO A BUYER OR LESSEE.**

OBTAIN THE PROPERTY REPORT REQUIRED BY FEDERAL LAW AND READ IT BEFORE SIGNING ANYTHING. NO FEDERAL AGENCY HAS JUDGED THE MERITS OR VALUE, IF ANY, OF THIS PROPERTY.

These materials are not intended to be an offer to sell, or solicitation to buy a unit in the condominium. Such an offering shall only be made pursuant to the prospectus (offering circular) for the condominium and no statements should be relied upon unless made in the prospectus or in the applicable purchase agreement. In no event shall any solicitation, offer or sale of a unit in the condominium be made in, or to residents of, any state or country in which such activity would be unlawful. No real estate broker or salesperson is authorized to make any representations or other statements regarding this project, and no agreements with, deposits paid to or other arrangements made with any real estate broker are or shall be binding on the developer. All artist's or architectural renderings, plans, sketches, graphic materials, prices, specifications, terms, conditions, statements, features, dimensions, amenities, existing or future views and photos depicted or otherwise described herein are proposed and conceptual only, and are based upon preliminary development plans, which are subject to revisions and other changes, without notice, in the manner provided in the purchase agreement and the offering circular and may not be relied upon. All features listed for the residences are representative only, and the Developer reserves the right, without notice to or approval by the Buyer, to make changes or substitutions of equal or better quality for any features, materials and equipment which are included with the unit. Furnishings and finishes are only included if and to the extent provided in your purchase agreement. The dimensions of units stated or shown in brochures will vary from the dimensions that would be determined based upon the description of the Unit boundaries set forth in the Declaration of Condominium. For the dimensions of the "unit" based on the depiction of "unit" in the Declaration of Condominium, refer to Exhibit 2 of the Declaration of Condominium included in the Prospectus Documents. No guarantees or representations whatsoever are made that existing or future views of the project and surrounding areas depicted by artist's conceptual renderings or otherwise described herein, will be provided or, if provided, will be as depicted or described herein. Any view from any unit or from other portions of the property may in the future be limited or eliminated by future development or forces of nature. Certain access to and rights to use recreational and other amenities within the development may be provided to the South Island, as described in the offering circular. We are pledged to the letter and spirit of U.S. policy for the achievement of equal housing throughout the Nation. We encourage and support an affirmative advertising and marketing program in which there are no barriers to obtaining housing because of race, color, sex, religion, handicap, familial status or national origin.