

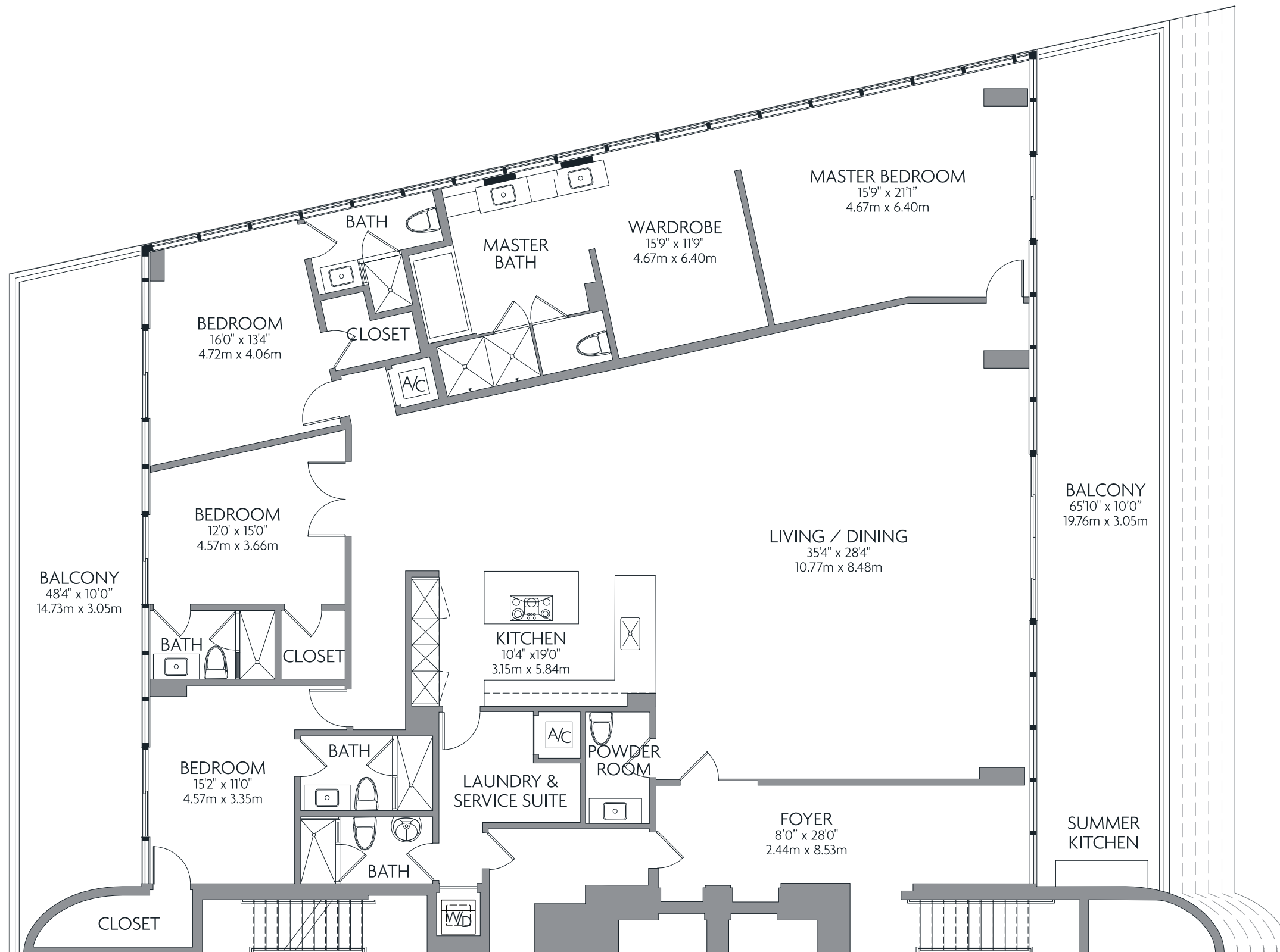
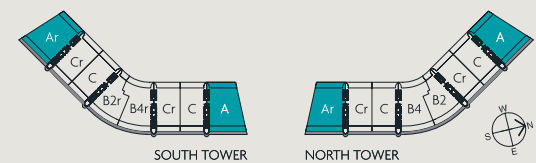
RESIDENCE A
4 BEDROOMS / 5.5 BATHROOMS

INTERIOR	3,927 SF	364.83 M ²
TERRACE	1,137 SF	105.63 M ²
TOTAL *	5,064 SF	470.46 M²

*Floor Plan shown on 9th Floor, add or subtract 64 SF / 5.9 M² per level

Privé offers 160 graciously appointed residences in two dramatically angled, 16-story buildings. Featuring flow-through layouts with soaring, ten-foot ceilings, each Privé residence offers dramatic views of both the Atlantic Ocean and the Intracoastal Waterway through expansive floor-to-ceiling windows.

Private elevator foyers lead to spacious, well-proportioned spaces ranging from 2,585 to over 9,000 square feet. Exceptional fixtures and finishes include European kitchens and baths, plus elaborate summer kitchens for outdoor entertaining on deep, private terraces.



BAY VIEW

INTRACOASTAL & OCEAN VIEW

Stated measurements and dimensions of residences are measured to the exterior boundaries of the exterior walls and the centerline of interior demising walls and in fact vary from the dimensions that would be determined by using the description and definition of the "Unit" set forth in the Declaration (which generally only includes the interior airspace between the perimeter walls and excludes all interior structural components and other common elements). This method of measurement used herein is generally used in sales materials and is provided to allow a prospective buyer to compare the Units with units in other projects that utilize the same method. Balconies are not part of the Unit. Measurements of rooms set forth on floorplans are generally taken at the farthest points of each given room (as if the room were a perfect rectangle), without regard for any cutouts or variations. Accordingly, the interior air space dimensions of the actual room will typically be smaller than the product obtained by multiplying the stated length and width. All measurements and dimensions are estimates based on preliminary plans which will vary with actual construction. All floorplans, specifications and other development plans are proposed and conceptual only, and are subject to change and will not necessarily accurately reflect the final plans and specification.